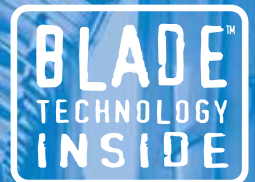




MobileMapper® 10



Your GIS Accuracy Enabler



EASY

AFFORDABLE

ACCURATE

COMPLETE



MobileMapper 10

MobileMapper 10

Geographical Information Systems and Location Based Services are strongly penetrating a wide range of applications and organizations. The growing need for geo-localization is naturally boosting the demand for efficient and affordable data collection solutions. Ashtech® is leading the GNSS democratization to enable a wider access to professional mapping. Today with MobileMapper 10, Ashtech makes it possible to massively deploy a professional accurate GIS receiver to any field work force.

Compact and lightweight, MobileMapper 10 is a complete, easy to use mapping solution for real-time collection of meter accurate data.

With MobileMapper 10, organizations will improve the quality of their geo-referenced information and their productivity with direct positive impact on operational costs.

Boost Your Mapping Productivity

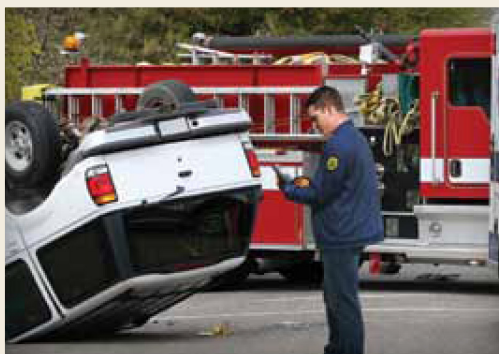
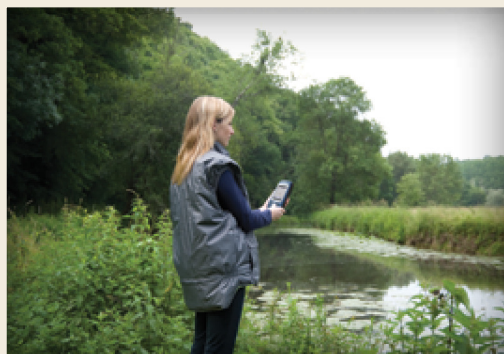
- Log your assets in real-time with meter accuracy
- Connect field and office work force for maximum proactivity
- Reach sub-half meter accuracy with post-processing

Unpack and Start Logging

- Ready to use complete mapping solution for field and office
- User friendly Windows® Mobile 6.5
- Easy-to-use software for short learning curve and quick logging operations

Made For Mobile GIS Work Force

- Compact & lightweight design for optimal mobility, use and comfort
- Integrated communications for easy data transfer
- Only receiver offering several days of battery life
- Ruggedized for outdoor use



MobileMapper Field and Office Software

A complete solution

The Ashtech MobileMapper software suite includes all GIS features that professionals really need without the burden of complicated and rarely used functions, both on field and office sides.

Running on MobileMapper receivers, MobileMapper Field is the perfect solution for GIS data collection, asset management, area measurements, maps creation and updates. The software is very intuitive and easy-to-use, requiring minimum training. It also provides direct interface to external sensors for a complete field solution.

The Ashtech MobileMapper Office tool can be used to differentially post-process raw GPS data collected with the MobileMapper Field software. Through an Internet connection, MobileMapper Office can automatically find and download the base data files that will match the collected raw data; it will compute corrected positions automatically.



Tune MobileMapper 10 To Your Applications

With Windows Mobile 6.5 you may upload necessary utilities or software on your MobileMapper 10, to suit your next job. You can collect GIS/GPS points and maps via the GIS application of your choice, either a third-party software such as ESRI® ArcPad® or the proprietary Ashtech application.

MobileMapper 10 Technical Specifications*

GNSS Characteristics

- Internal antenna: 20 channels
 - GPS L1 C/A
 - SBAS: WAAS/EGNOS/MSAS
- External antenna connector
- NMEA output

Accuracy Specifications (Horizontal RMS)¹

- Real-time SBAS: < 2 m typical
- Post-processed: < 50 cm typical

Processor

- ARM9™
- Clock frequency: 600 MHz

Operating System

- Microsoft® Windows Mobile 6.5
- Languages available: English, French, German, Italian, Japanese, Korean, Portuguese, Spanish, Simplified & Traditional Chinese²
- Software package includes:
 - Internet Explorer®
 - Office Mobile
 - ActiveSync®
 - Transcriber (handwriting recognition)

Communications

Cellular

- Built in GSM/GPRS
- Quad band 850/900MHz, 1800/1900 MHz

Bluetooth

- Bluetooth 2.1 with EDR

WiFi

- Integrated

Interface

- USB

Physical Characteristics

Size

- 169x88x25 mm (6.6x3.5x1 in)

Weight

- 380g with battery (13.4 oz) (310g without)

User Interface

Keyboard

- 4-way navigation, menu, contextual keys
- Illuminated keyboard with touch screen
- Virtual keyboard

Display

- Color TFT High resolution display sunlight readable with touch screen, LED backlight.
- Size: 3,5 "
- Colours: 262k

Memory

- 128 MB SDRAM
- Storage: 256 MB NAND Flash (non volatile)
- MicroSDHC™ memory card (up to 8GB, SanDisk®, Kingston® recommended)

Environmental Characteristics

- Operating temperature:
 - 10° to +60°C (14 to 140°F)
- Storage temperature:
 - 30° to +70°C without battery (-13 to 158°F)
- Humidity: 95% non condensing
- Waterproof: IP54
- Free drop: 1.2 m on concrete

Power Characteristics

- Battery life: > 20 hrs @ 20 °C with GPS on³
- Charging time: 4 hours
- Removable battery

Multimedia & Sensors

- Camera 3M Pixels
- E-Compass
- G-Sensor
- Speaker
- Microphone

Software Options

- Ashtech MobileMapper Field and Office software
- Post-processing
- ESRI ArcPad software bundle (USA only)

Standard Accessories

- Stylus
- Hand-strap
- A/C charger
- USB cable

Optional Accessories:

- External magnetic GPS antenna
- Pole bracket

⁽¹⁾ Handheld accuracy performance achieved in good conditions (open sky) with PDOP <3 and more than seven satellites in view.

⁽²⁾ To be specified when ordering – no further OS language modification is possible.

⁽³⁾ GPS on, no Bluetooth or WiFi are used, backlight used 20% of the time at minimal settings.

^(*) Including available options.



Become a Business Partner

Ashtech is actively recruiting Business Partners worldwide and focused on customer needs for complete and dedicated GPS/GIS solutions. As a third-party developer and partner, you will be able to take advantage of the Business Partner Software Libraries, including various development tools. Contact us today to learn how you can easily integrate your GIS software and hardware with MobileMapper products to build valuable solutions for your customers.

Mobile Mapping Contact Information:

In USA +1 408 572 1103 ■ Fax +1 408 572 1199

In South America +1 305 726 7813

Email mobilemapping@ashtech.com

In France +33 2 28 09 38 00 ■ Fax +33 2 28 09 39 39

In Russia +7 495 980 5400 ■ Fax +7 495 981 4840

Email mobilemappingemea@ashtech.com

In Singapore +65 9838 4229 ■ Fax +65 6777 9881

In China +86 10 5802 5174 ■ Fax +86 10 5802 5135

Email mobilemappingapac@ashtech.com

www.ashtech.com

